



M/Y ELEMENT



*Ultimate Luxury* 

---

---

# *Sundeck*

*Aerial view*



*Ultimate Relaxation*

*Sundeck Jacuzzi*

---

---

---

# *Sundeck Dining & Lounge Area*



*Dine al fresco*

---

---



*Bow*

---

*Lounge area*

Element Motor Yacht

# *Upper Deck Aft*

*Enjoy Paradise*



# *Main Deck Aft*

---

---



# *Upper Deck Salon*

---

---







*Main Deck*

*Dining & Lounge Area*



# *Master Suite I*

---



*Study*

---



# *Master Suite II*



# *VIP Suites*



Element Motor Yacht

# *Twin Staterooms*





Element Motor Yacht

*Swimming platform*  
& 

---

*Water Toys*

**SPECIFICATIONS**

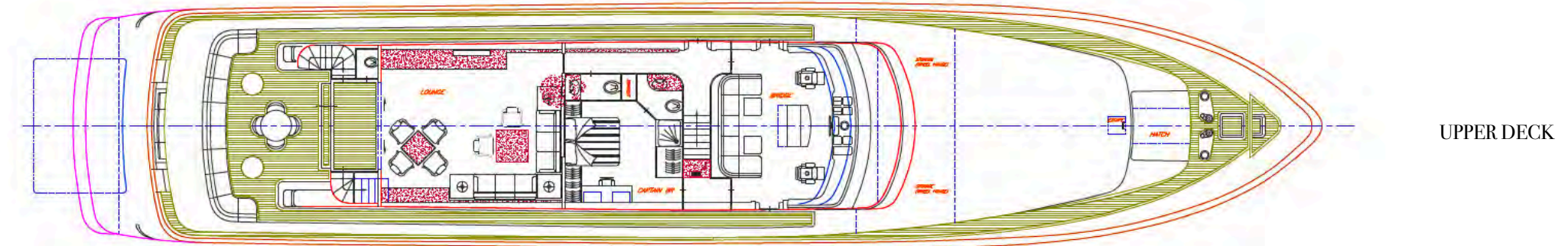
LOA	42.40m
BEAM	8.30 m
DRAFT	2.10 m
BUILDER	Cantieri di Pisa
YEAR BUILT	2002
REFIT	2022
CABINS	6
TOTAL GUESTS	12
TOTAL CREW	9
CRUISING SPEED	18 knots
MAXIMUM SPEED	22 knots
ENGINES	2 x 3,700Hp MTU 16V 4000 M90 Diesel
FUEL CONSUMPTION	750 Litres/Hr
GENERATORS	2 x 80kw 220v
GENERATOR CONSUMPTION	300 lit/day
GROSS TONNAGE	363
STABILIZERS	Underway

**ACCOMODATION**

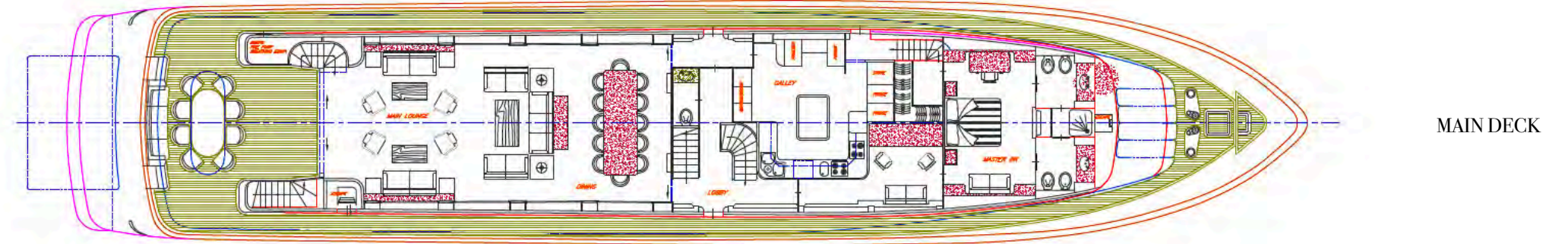
- 1 x Master Suite on the main deck
- 1 x Master Suite located on the lower deck
- 2 x Double Staterooms on the lower deck
- 2 x Twin Staterooms on the lower deck
- All with ensuite facilities

**TENDER & TOYS**

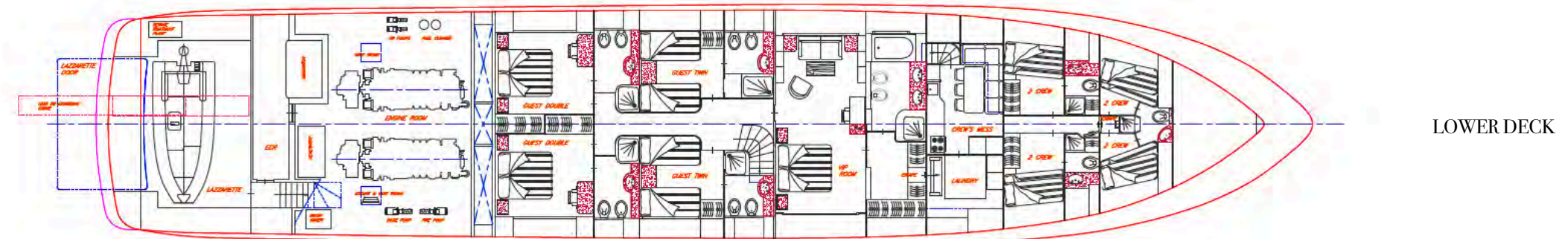
- 1 x Ribeye 4.3m Rib tender with Yamaha (70HP) Outboard engine
- 2 x Sea-Doo Spark Trixx (2-seater)
- 2 x Stand-up paddle boards
- 1x Seabob
- 1 x Inflatable butterfly tube (2-seater)
- 1 x Inflatable banana (4-seater)
- 2 x sets Adult waterskis
- 1 x set Children waterskis
- 2 x medium Slalom water skis
- 1 x large Slalom waterski
- 1 x medium wakeboard
- 1 x large wakeboard
- Mask/snorkel and fin sets for 10 adults and 5 children
- Assorted fishing gear (3x trawling rods; 1x spinning rod)
- Fishing equipment



UPPER DECK



MAIN DECK



LOWER DECK



*an  
unforgettable  
experience*



