



SAN LORENZO

SL104

M/Y RARE DIAMOND



Ultimate Luxury

Upperdeck Lounge Area



Ultimate Leisure

Upperdeck Dining Area

Dine Alfresco



Rare Diamond Motor Yacht

Main Deck Aft

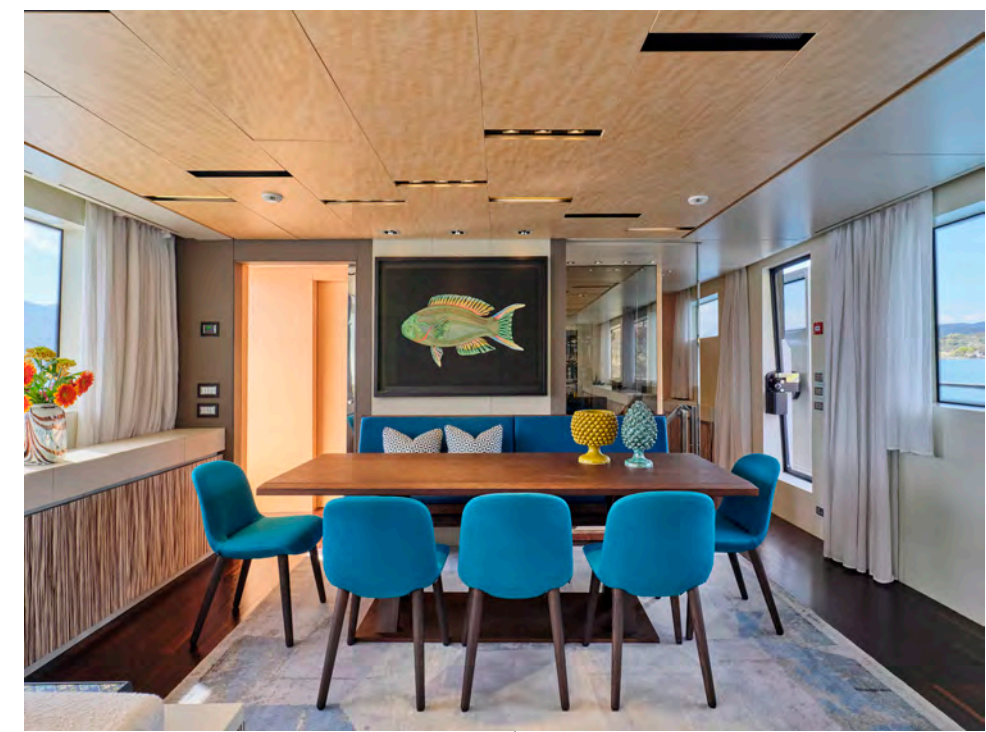
Enjoy Paradise





Main Deck

Dining & Lounge Area



Master Suite



VIP Suite I





VIP Suite II

Twin Staterooms



Water Toys



SPECIFICATIONS

LOA	32.30m
BEAM	7.10 m
DRAFT	2.65 m
BUILDER	Sanlorenzo
MODEL	SL104
YEAR BUILT	2011
CABINS	5
TOTAL GUESTS	11
TOTAL CREW	6
CRUISING SPEED	23 knots
MAXIMUM SPEED	28 knots
ENGINES	2 x Inboard Diesel MTU 16V 2000 M93

FUEL CONSUMPTION	700 Litres/Hr
GENERATORS	2 x Kohler 55KW Gensets /220 VAC, 60 HZ 3-PHASE 350 lit/pd
GENERATOR CONSUMPTION	312 lt. per day
GROSS TONNAGE	199
STABILIZERS	Zero Speed

ACCOMODATION

- 1 x Master Suite
- 2 x VIP Suites
- 2 x Twin Staterooms
- 1 x Pullman berth
- All cabins with en-suite facilities

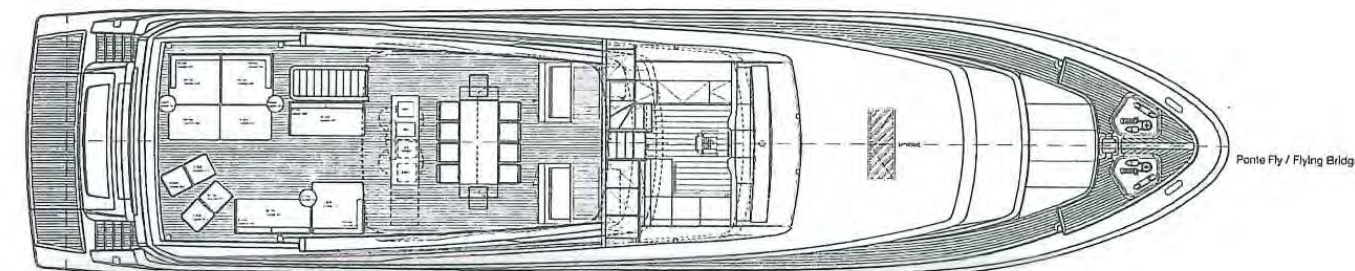
TENDER & TOYS

- 1 x Novurania DL 430 with outboard engine Yamaha hps
- 1 x Jet Ski Yamaha FX1800AKA (3 seater)
- 3 x Seabobs F5S
- 2 x Tubes
- 2 x Standup Paddleboards
- 1 x Towable sofa (3 seater)
- 1 x Wakeboard
- 2 x Twin waterskis
- 1 x Slalom waterski
- Snorkeling Equipment & Flippers for 11 people, adults and children

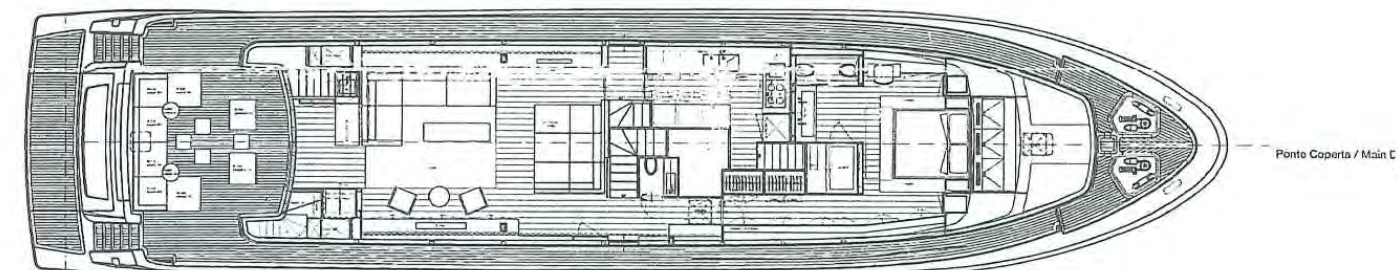
PROFILE



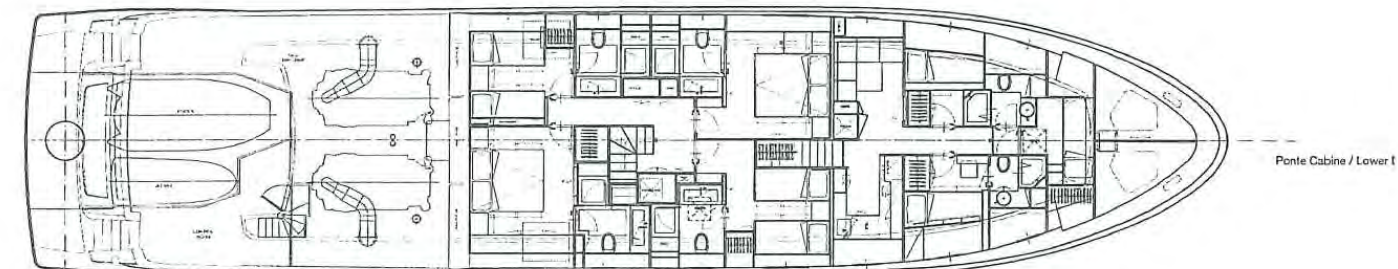
UPPER DECK



MAIN DECK



LOWER DECK





*an
unforgettable
experience*

