

# Trident

65 m | 12 guests | 17 crew







# Welcome Aboard

It gives us great pleasure to introduce to you the ultimate in luxury chartering. Trident synthesizes six decades of Feadship excellence and experience into a superlative yacht that offers every comfort imaginable. Exquisitely finished, superbly equipped, Trident was designed to provide charter guests with unprecedented levels of hospitality and service. The vacation of a lifetime beckons.





# Relax Sundeck / Jacuzzi Area







**BON APPÉTIT!** Dining Deck





**WORLD CLASS CHEFS** Haute cuisine is made easy by our highly talented chefs on board Trident.









# LOUNGE & PLAY

Sky lounge







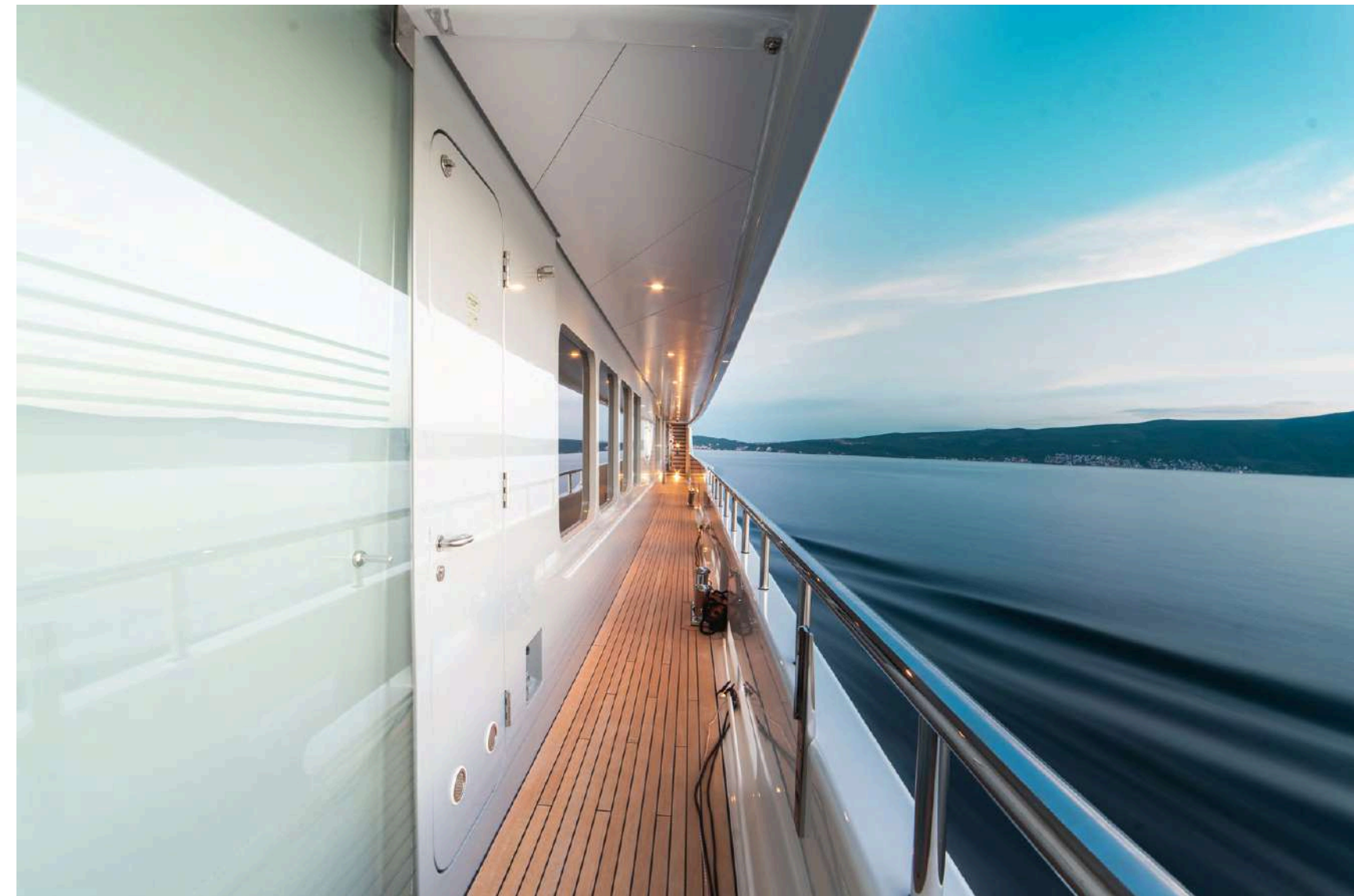






# SHADED CONFORTS

## Aft Deck







# A PEACEFUL SPACE

## Main Salon



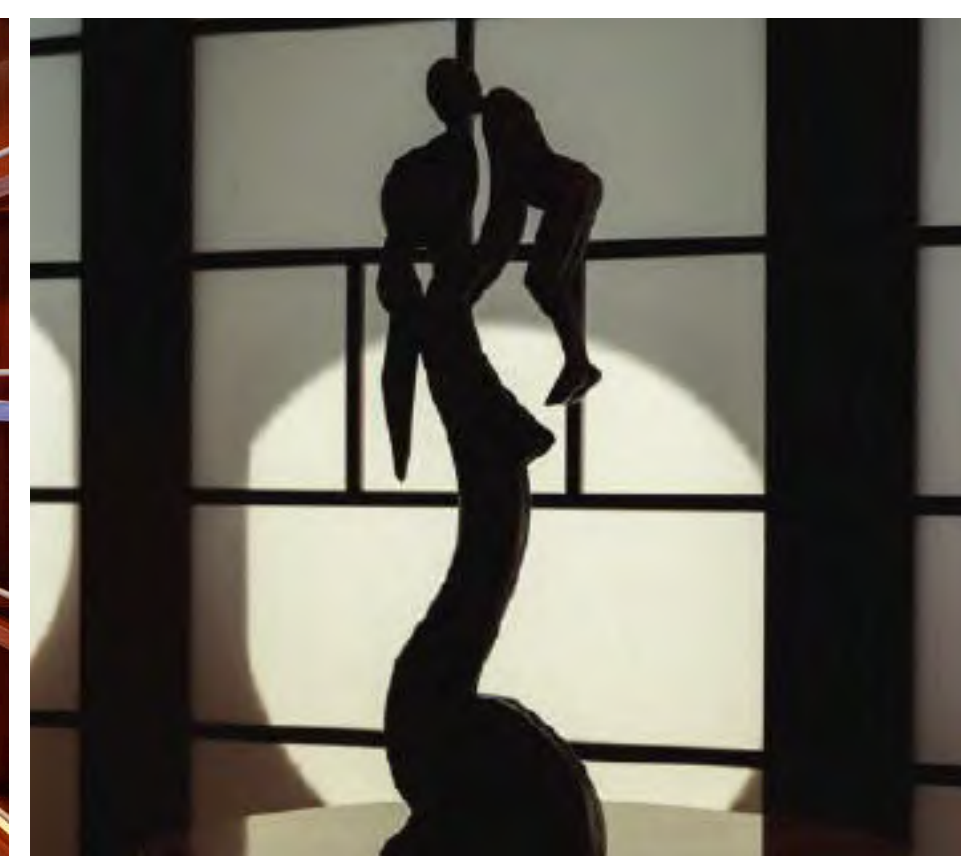




Dining room

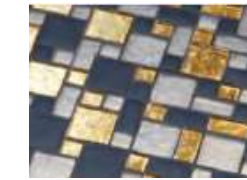






**Master Stateroom**





**Master Stateroom  
His & Her Bathroom**



**FOCUS**  
Private office

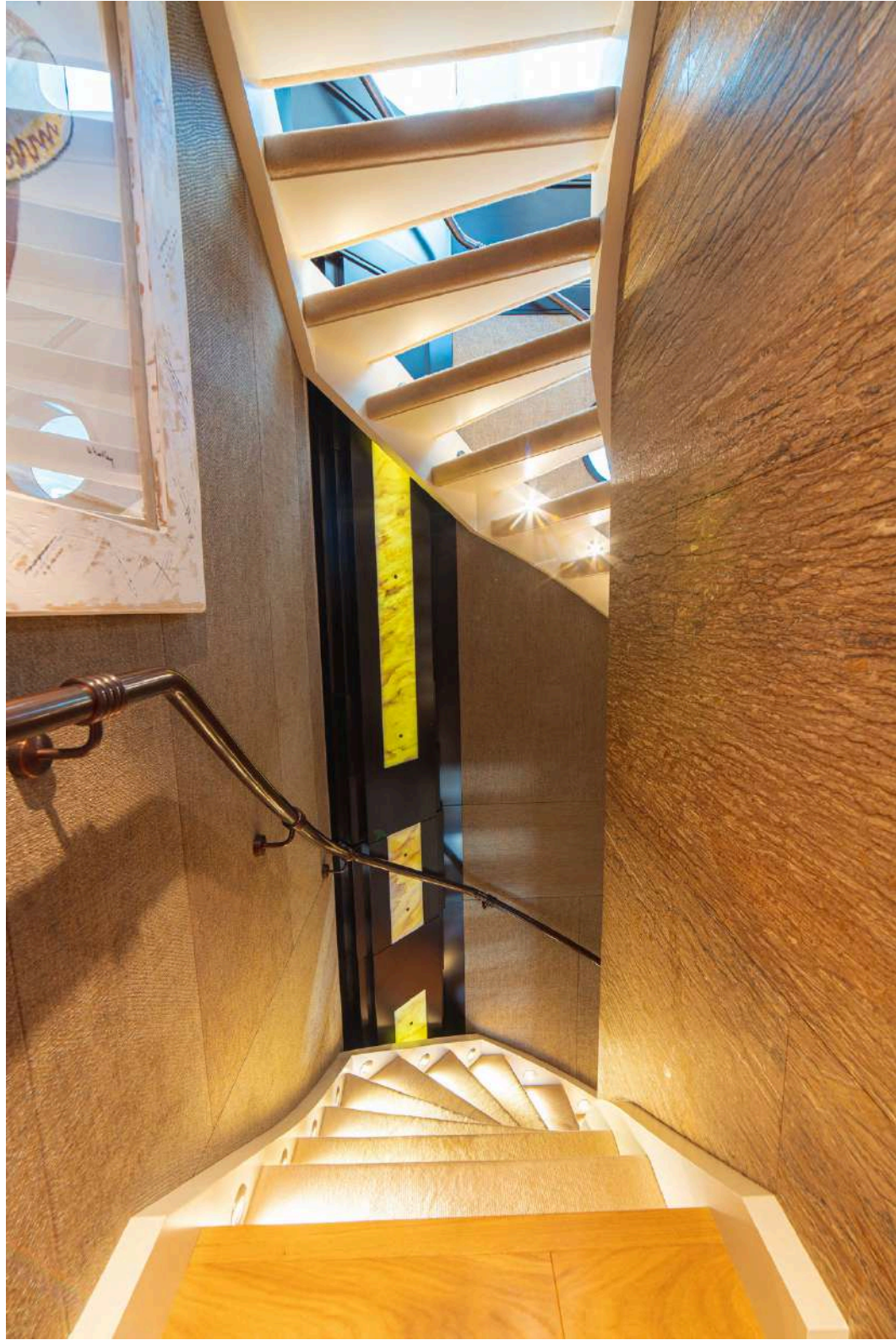






**VIP Stateroom**





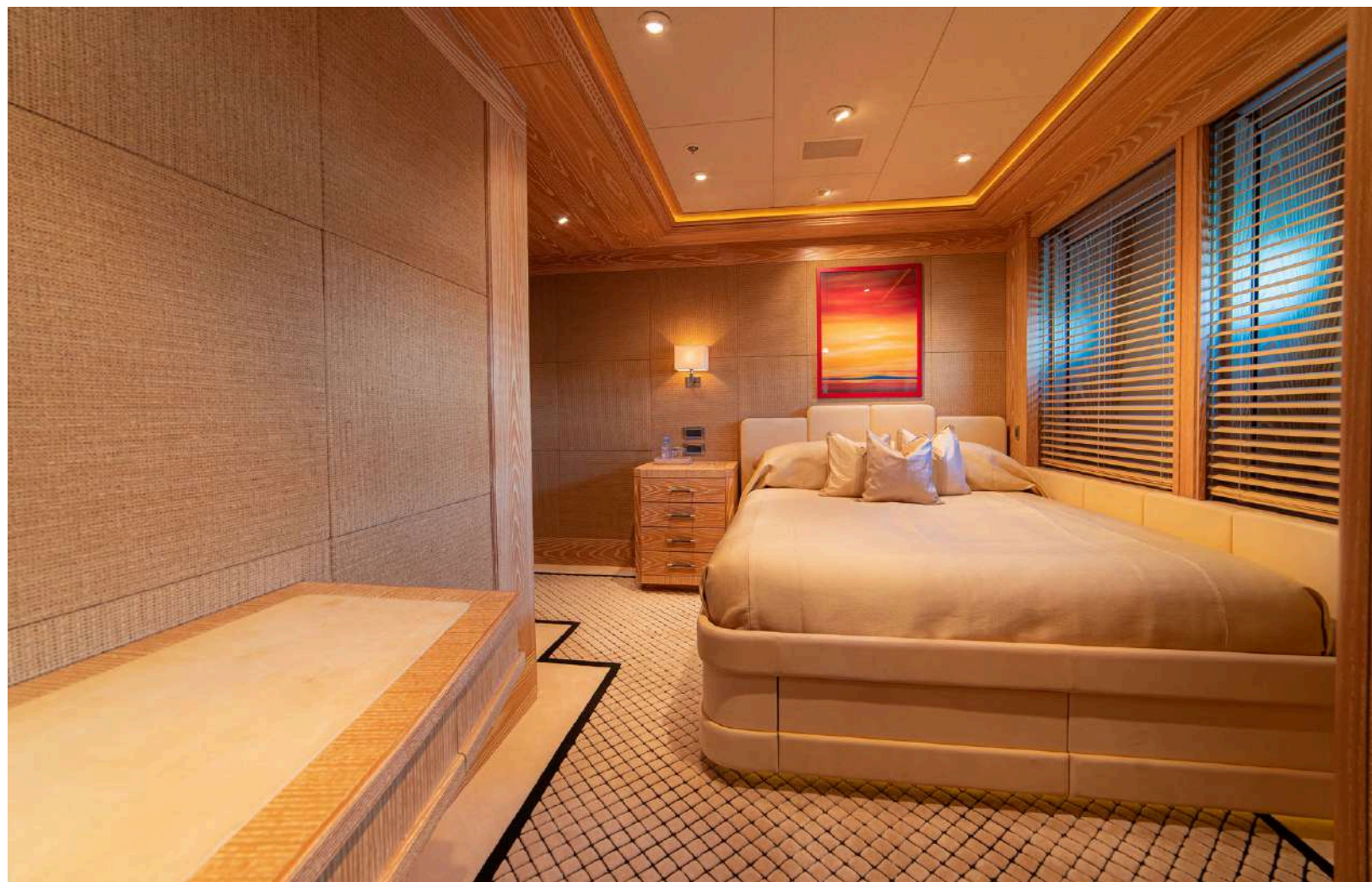




**Guest Staterooms**



**Guest Staterooms**







**Guest Staterooms**



**Chase boat Axopar 37  
"AXE" joined the mother  
ship in 2020**





# Trident





A large white yacht is sailing on a blue bay, leaving a white wake. In the background, there are green mountains and a small town on the shore. A smaller boat is visible in the distance to the left.

## Available for Charter

High season: €550,000 per week + 35% APA + VAT + Delivery fee from Tivat (fuel cost tbc)

Low season: €500,000 per week + 35% APA + VAT + Delivery fee from Tivat (fuel cost tbc)





### Sun deck

1. Sun deck aft
2. Sun deck foyer
3. Powder room
4. Jacuzzi

### Bridge deck

5. Bridge deck aft
6. Bridge deck lounge
7. Lounge bar
8. Powder room
9. Pantry
10. Ship's office
11. Captain's cabin
12. Wheelhouse

### Main deck

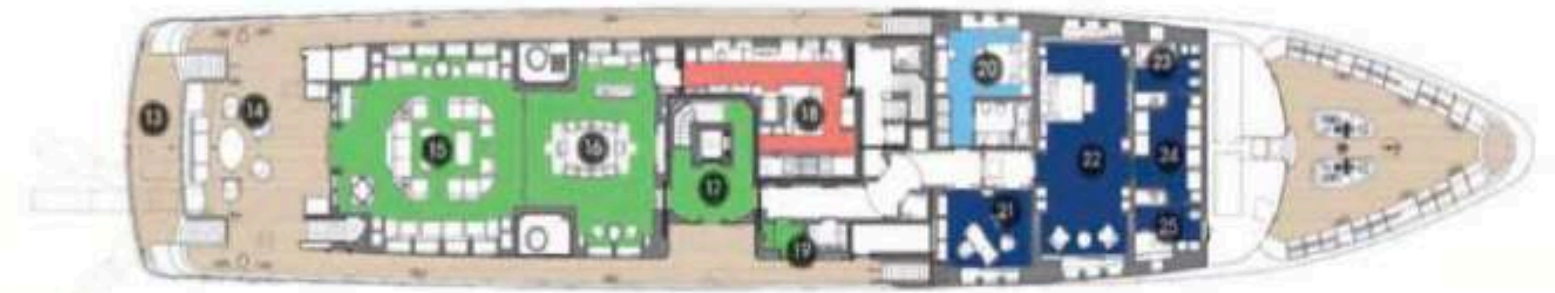
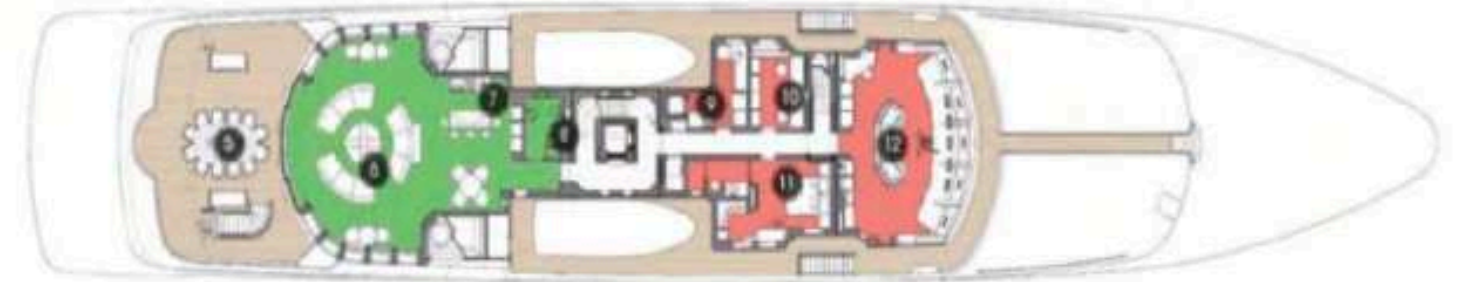
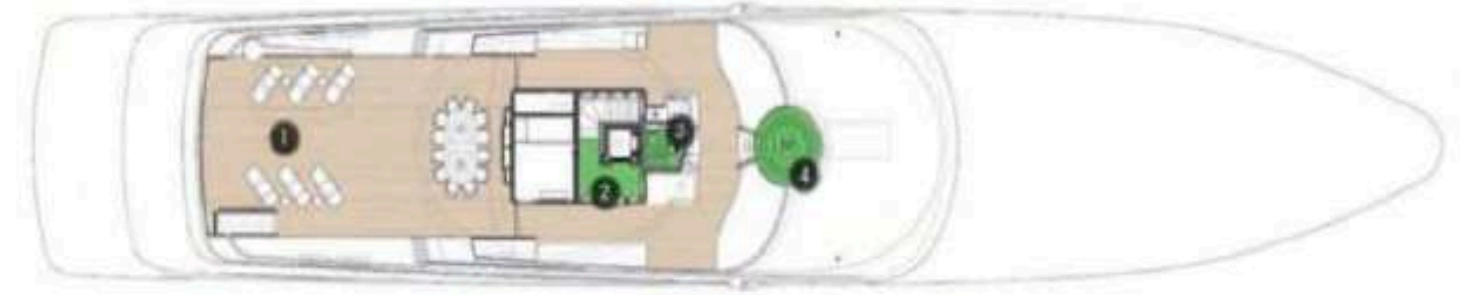
13. Beach platform
14. Beach/ swim platform
15. Main lounge
16. Dining room
17. Main entrance
18. Galley
19. Powder room
20. VIP stateroom
21. Private office
22. Master stateroom
23. Her bathroom
24. Dressing room
25. His bathroom

### Lower deck

26. Lazarette
27. Engine room
28. Guest stateroom 1
29. Guest stateroom 2
30. Foyer
31. Guest stateroom 3
32. Guest stateroom 4
33. Guest stateroom 6
34. Guest stateroom 5
35. Crew mess
36. Crew cabins

### Tank deck

37. Storage aft
38. Crew lounge
39. Staff cabin
40. Laundry room
41. Cool / freezer store
42. Ship's store / technical space





# Trident



## Specifications:

<b>LOA:</b>	65.22m
<b>Beam:</b>	11.50m
<b>Draft:</b>	3.40m
<b>Year:</b>	2009
<b>Builder:</b>	Feadship – Royal Van Lent
<b>Type:</b>	Twin Screw Mega Motor Yacht
<b>Classification:</b>	RINA
<b>Gross tonnage</b>	1,226 tons
<b>Fuel capacity:</b>	149,250 litres
<b>Fresh water capacity:</b>	28,780 litres
<b>Main engines:</b>	2x MTU 16V4000 M60R
<b>Speed:</b>	Cruising 13 knots / Maximum 16 knots
<b>Range:</b>	6,700 NM at cruising speed
<b>Stabilizers:</b>	Zero-speed
<b>Naval Architect:</b>	De Voogt, Naval Architects
<b>Exterior Styling:</b>	Donald Starkey Design
<b>Interior Styling:</b>	Donald Starkey Design
<b>Sleeps:</b>	12
<b>Crew:</b>	17
<b>Cabins:</b>	8

## Cabin Layout:

- One full beam Master stateroom with king sized bed, his & her bathrooms and dressing room on main deck
- One VIP stateroom with queen size bed on main deck
- 6 convertible guest staterooms with king size bed, of which two staterooms have US King size bed convertible to two XL Twin size beds, on lower deck

➔ All with en-suite facilities

## Communications:

2x GSM  
Satcom Phone & Fax  
4x dedicated VDIP Lines  
High Speed Wireless Internet  
SSB and VHF Radios  
GMDSS  
FB 500

## Tenders & Toys:

### Tenders:

Axopar 37 “Axe”  
Nautica Catamaran Tender  
Super Air Nautique 230

### Toys:

2x Seadoo RTX Rs  
Yamaha Superjet  
3x Seabob F7 and F5  
Flite board  
Foil Board  
4x Seawings  
2x Kayaks  
2x Jobe Padelboards  
Waterskis, wakeboards and pull toys  
Floating slide and floating trampoline  
Snorkel & scuba gear  
(rendez-vous diving only during charter – restrictions apply)